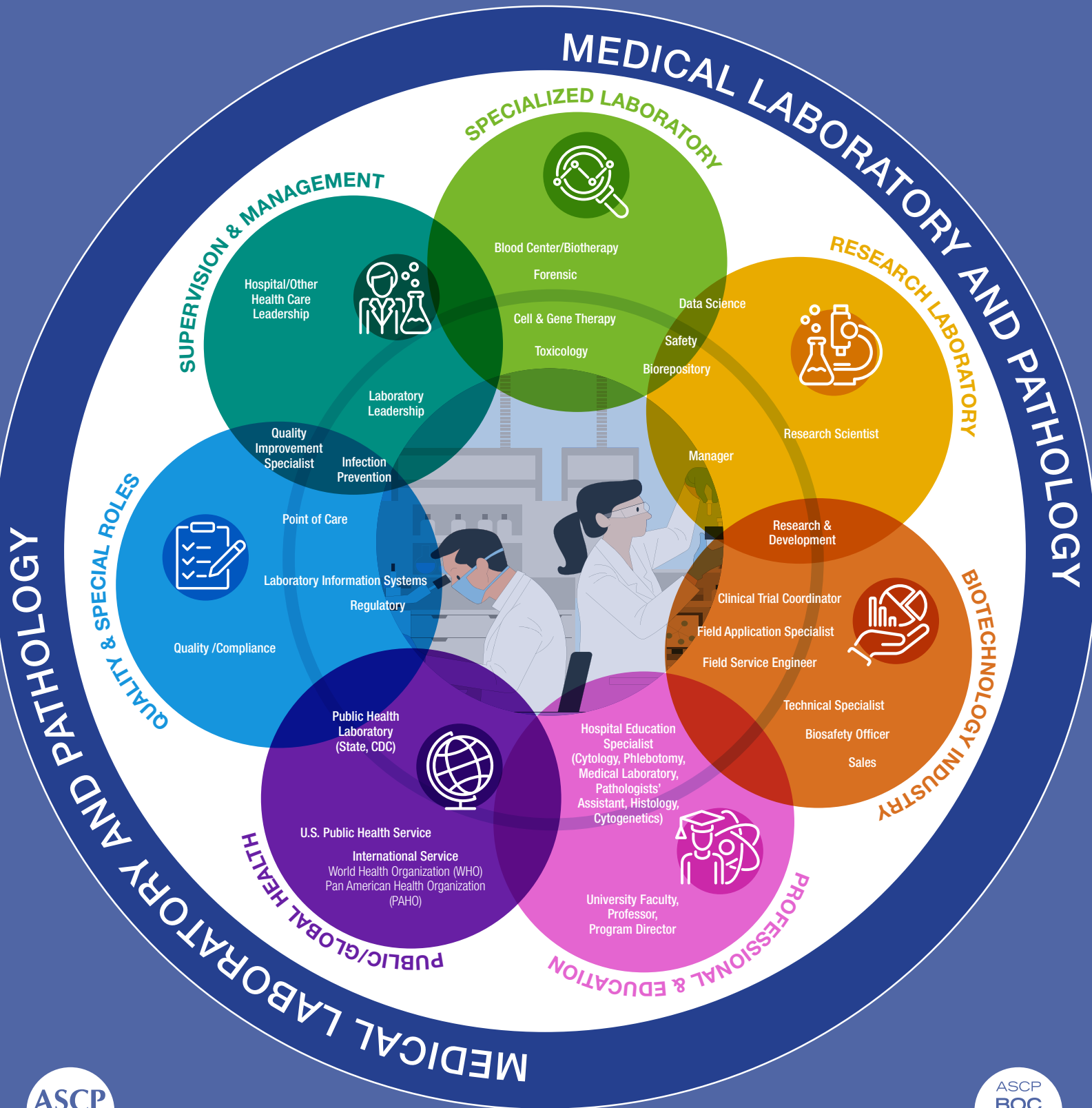


# Where Can Laboratory Science Take You?



# Where Can Laboratory Science Take You?

## MEDICAL LABORATORY

- Pathologist/Doctoral-Level Laboratory Director
- Pathologist Assistant
- Point of Care Coordinator
- Laboratory Supervisor
- Laboratory Manager
- Laboratory Administrator
- Core Laboratory Operations Director

## PUBLIC HEALTH LAB

- State Public Health Laboratory
- Federal Centers for Disease Control and Prevention (CDC)
- County Health Department
- U.S. Public Health Service, Commissioned Corps
- U.S. State Department
- Laboratory Epidemiologist
- Bioterrorism Preparedness Specialist

## PUBLIC/GLOBAL HEALTH ADMINISTRATION

- International [WHO, PAHO, or similar]
- U.S. Public Health Service, Administration
- Public Health Surveillance Officer

## PROFESSIONAL & EDUCATION

- Program Director
- Faculty Positions – Tenure Track
- Faculty Positions – Adjunct Track
- Science Outreach Coordinator
- Technical Writer (laboratory procedures)
- Certification Specialist
- Editor (journal or similar)
- Education Specialist
- Secondary Education (high school career technical educator; science teacher)

## SPECIALIST LABORATORY

- Toxicology
- Forensics
- Blood Center/Biotherapy
- Cell and Gene Therapy
- Veterinary
- Genetic Counselor

## LABORATORY INFORMATION SYSTEMS

- Laboratory Information Systems Analyst
- LIMS Developer
- Health Information Specialist/EMR Data Scientist

## DATA SCIENCE

- Bioinformatics Scientist
- Data Curation Specialist
- Variant Curator

## RESEARCH LABORATORY

- Clinical Research Coordinator
- Biorepository Scientist
- Research and Development Scientist
- Research Laboratory Manager/Director
- Operations Director (General/Core Laboratory)
- Technical Writer
- Animal Care Specialist

## BIOTECHNOLOGY INDUSTRY

- Project/Program Manager
- Field Service Engineer
- Business Development
- Field Application Specialist
- Research & Development Scientist
- Sales/Marketing
- Clinical Trial Manager
- Medical Science Liaison
- Technical Specialist

## SAFETY

- Health System Risk Management Quality Leader
- Quality/Regulatory Specialist
- Laboratory/Hospital Safety Officer
- Environmental Health and Safety Officer
- Occupational Safety and Health Administration (OSHA) Specialist

## QUALITY, COMPLIANCE, AND REGULATORY

- Quality and Compliance Specialist/Manager
- Quality Improvement Specialist/Manager
- IRB Specialist/Manager
- Regulatory Affairs Coordinator/Manager
- Infection Prevention Specialist



American Society for  
Clinical Pathology



ASCP  
BOARD OF  
CERTIFICATION®

